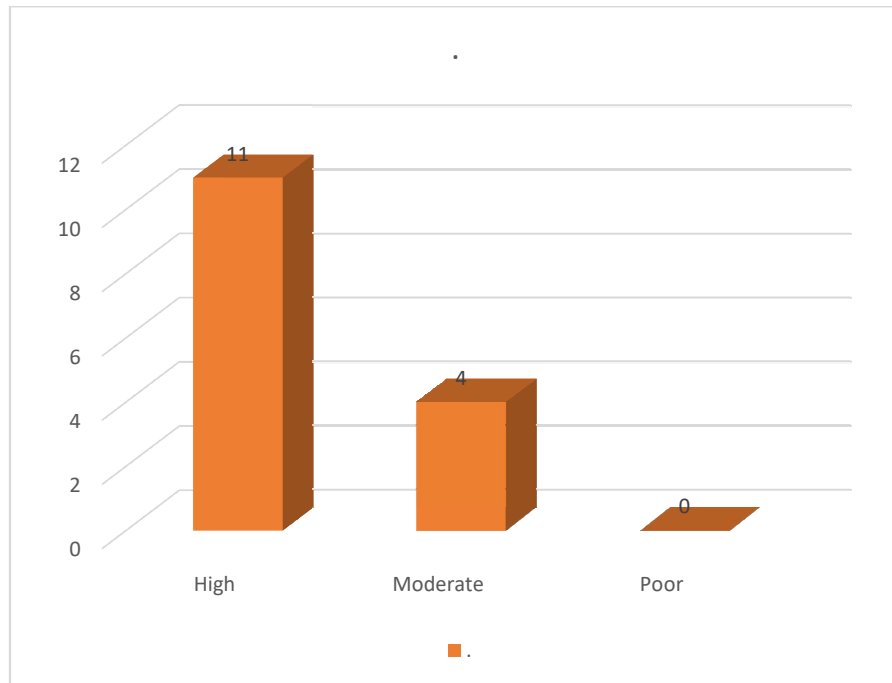


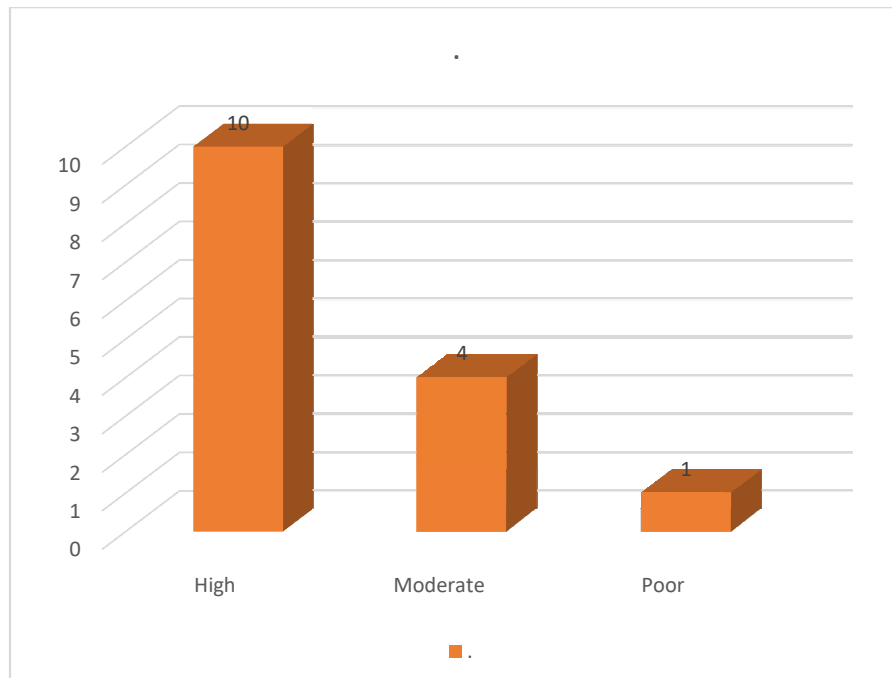
Shri Shivaji College of Arts, Commerce and Science, Kandhar

Feedback Analysis of Employer - 2022-23

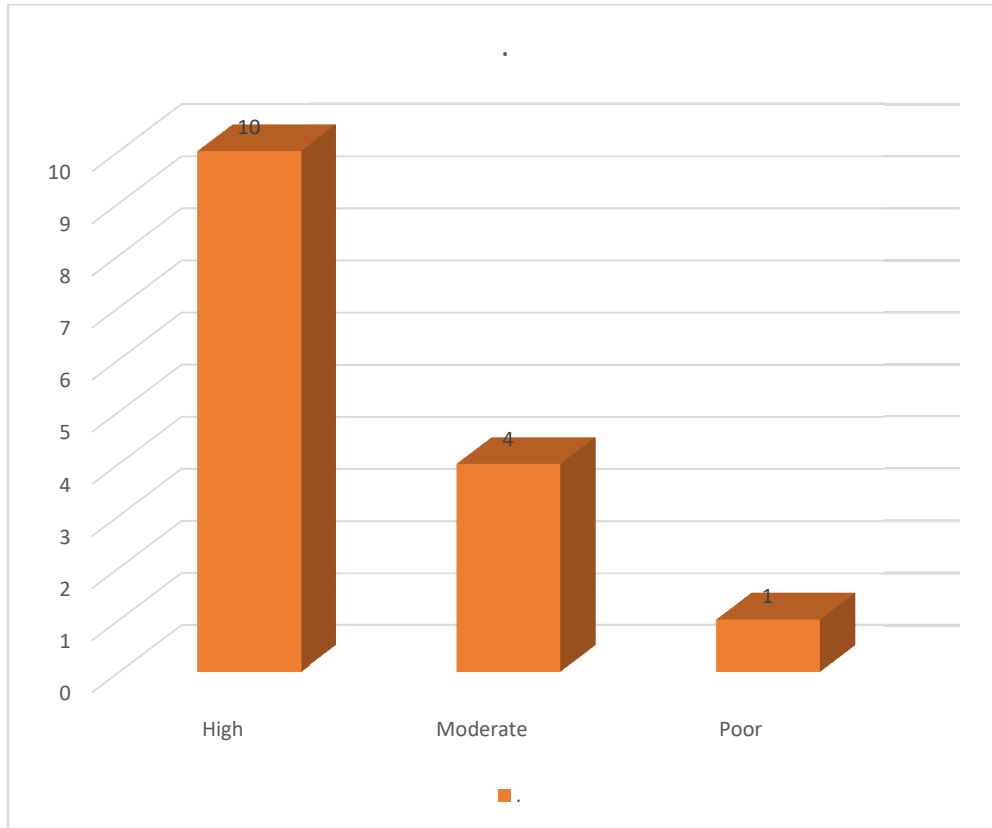
1. General communication skills



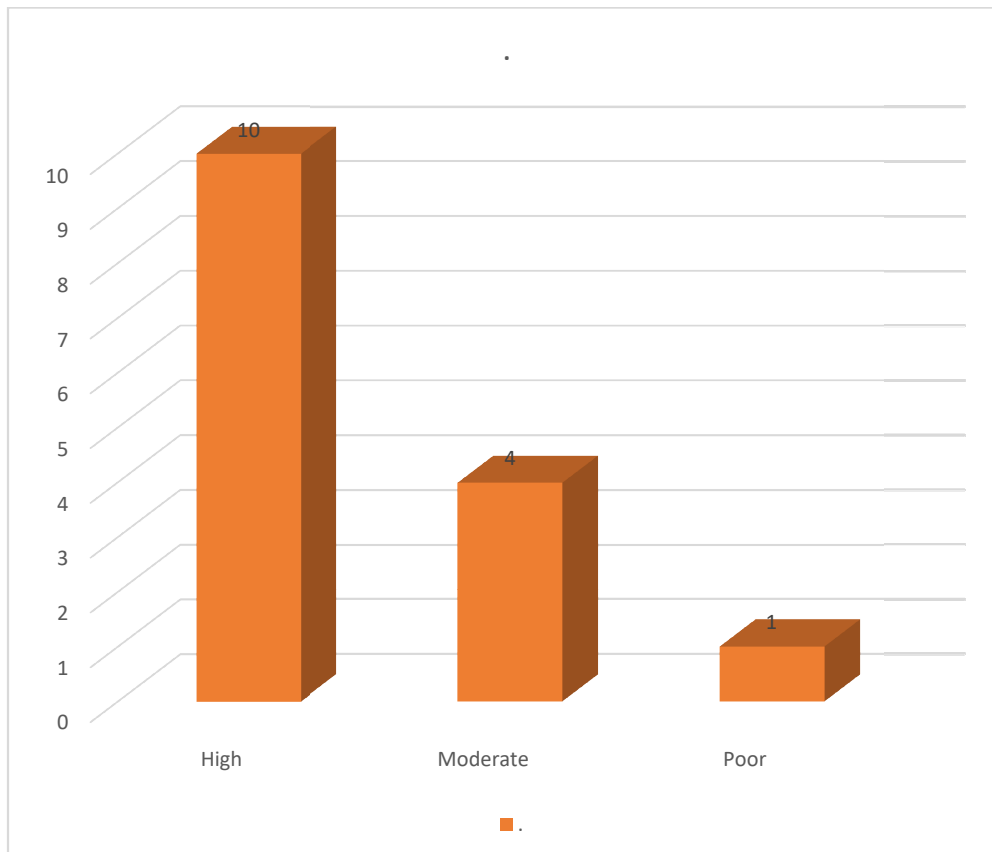
2. Working as part of a team



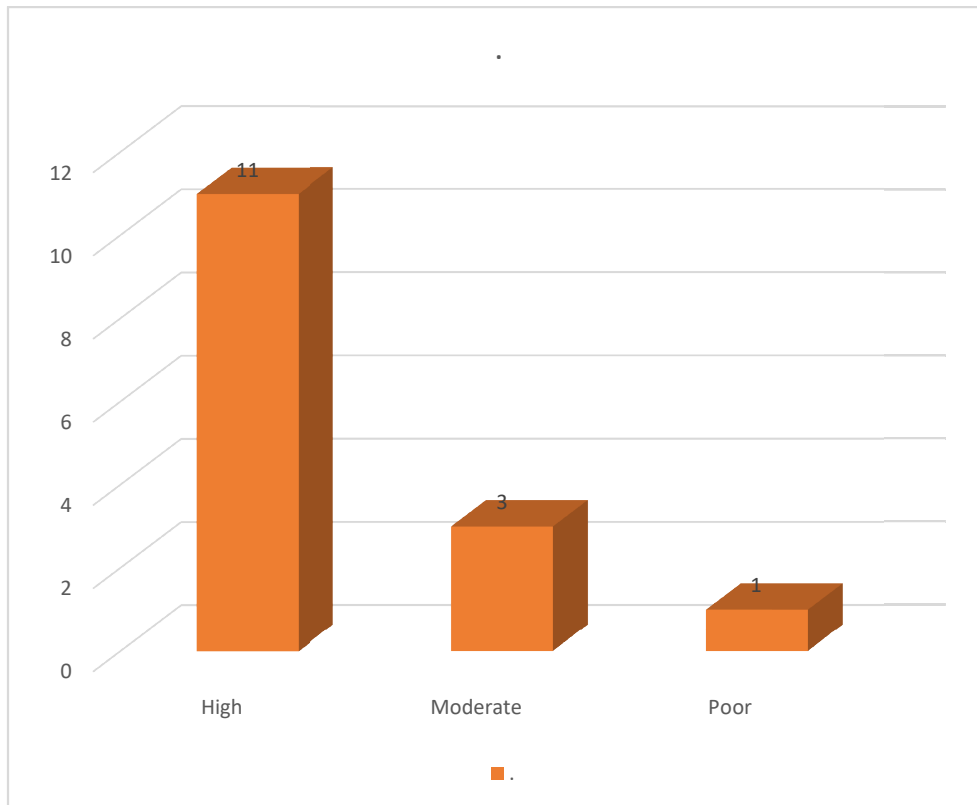
3. Creative in response to workplace challenges



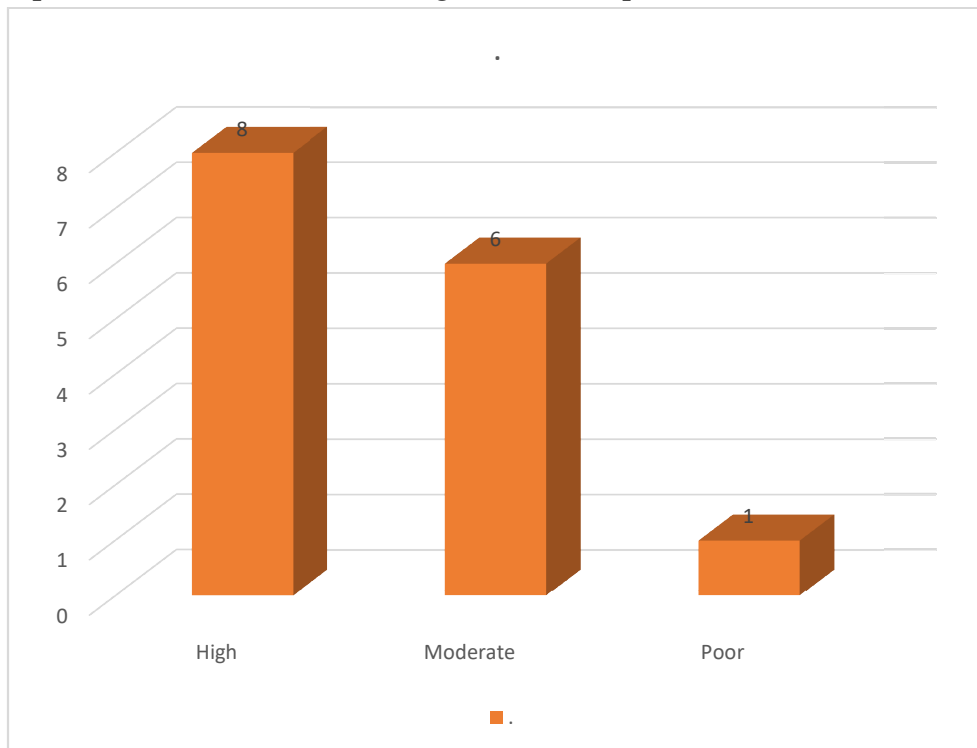
4. Their planning and organization skills



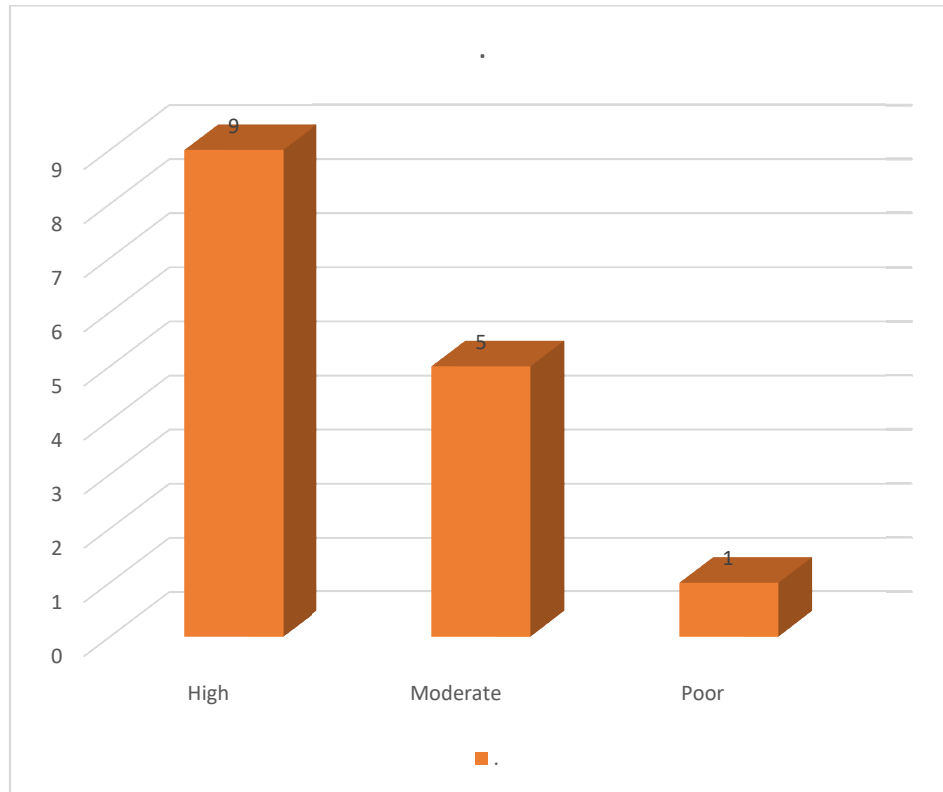
5. Self-motivated and taking on appropriate level of responsibility



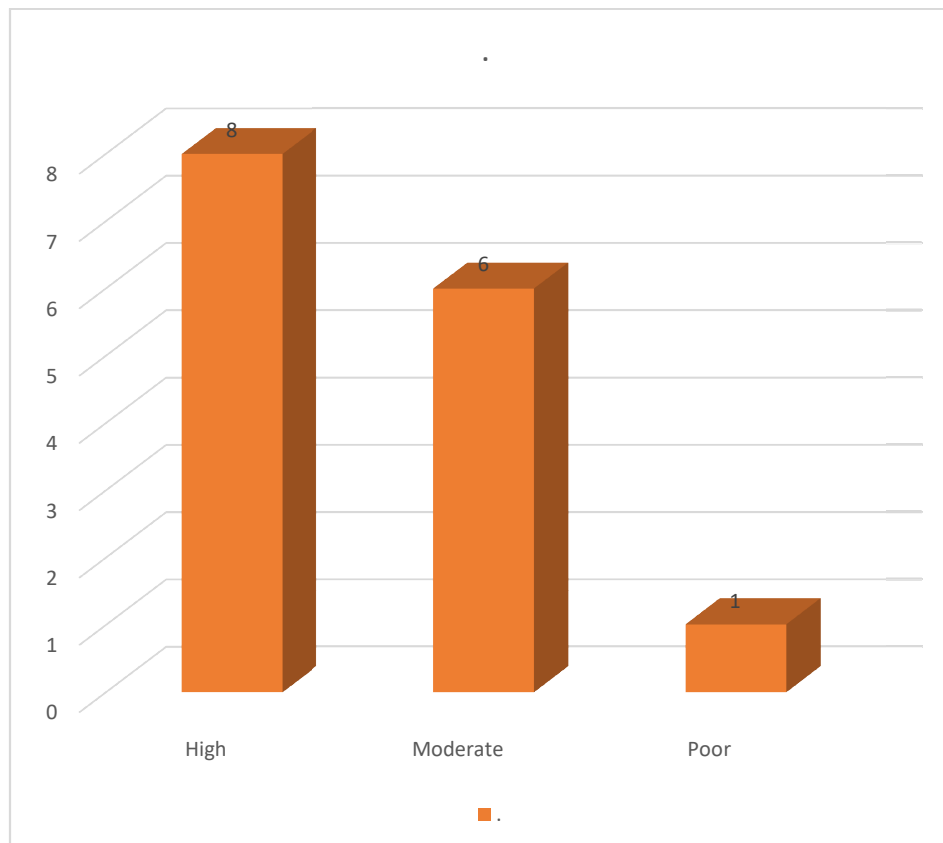
6. Open to new ideas and learning new techniques



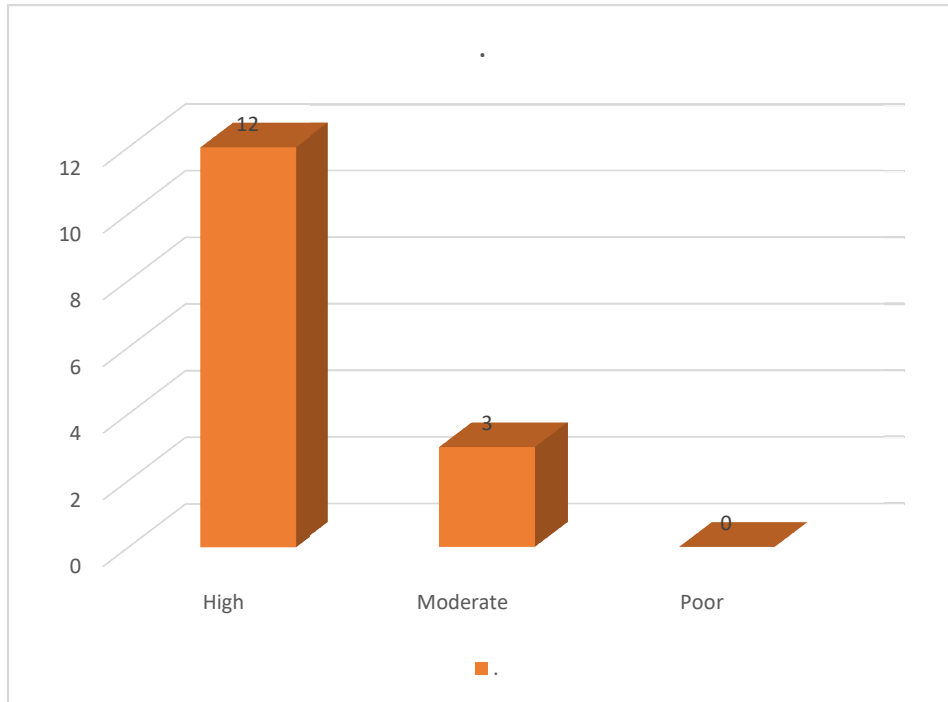
7. Using technology and workplace equipment



8. Ability to contribute to the goal of the organization



9. Relationship with seniors/peers/subordinates



10. Fulfillment of demands at workplace

